

PLAYBILL

CIRCULAR
THEATRE



*Always
Patmy Cline*

2021 SEASON

GENERAL INFORMATION

BOX OFFICE HOURS

MONDAY - FRIDAY | 12PM - 5PM

MONDAY - FRIDAY PERFORMANCE DAYS | 12PM - CURTAIN

SATURDAY | 2PM - CURTAIN

SUNDAY | 12PM - CURTAIN

LATE ARRIVALS

Patrons arriving late will be seated at the House Manager's discretion.

NO STANDING

No standing is permitted in the back of the theatre. If you become uncomfortable and/or have to move out of your seat for any reason, you may stretch your legs in the upper or lower lobby.

ELECTRONIC DEVICES

Please turn off all electronic devices that light up or make noise. Please, no texting. The taking of pictures and/or recordings (audio or video) is prohibited; the device may be taken from you and held until after the show.

EMERGENCY CALLS

If you anticipate the need to be reached in the event of an emergency, you may leave your name and seat number with the House Manager. A House Manager will also be available in the House during the run of the show. Our emergency contact number is **616 632 2996**. In the event that someone is not available at this number, Aquinas College Campus Safety's number is **616 632 2462**; a dispatcher is available 24/7.

YOUNG AUDIENCE

Most Main Stage productions are geared toward mature audiences and may not be appropriate for younger audiences. Our Magic Circle productions provide wonderful family entertainment and an introduction to the live theatre experience. Please call the box office at **616 456 6656** for information on age appropriateness of any of our shows. Children below school age may not attend our Main Stage productions. Please, no babes in arms or toddlers. At no time can a child enter the auditorium without a ticket.

SPECIAL PATRON SERVICES

An induction loop is provided for the benefit of hearing aid users. To use, please switch your hearing aid to "T." Handicapped and wheelchair seating is available and easily accessible. When reserving tickets, please notify the box office personnel of any special needs or seating requirements.

SMOKING

Aquinas College is a smoke-free campus.



CIRCLETHEATRE.ORG | 616 456 6656

BOX OFFICE | 1703 ROBINSON RD SE

WELCOME TO OUR CIRCLE

Greetings & Welcome!

We are over the moon to present to you Circle Theatre's first musical production after our long intermission, *Always... Patsy Cline*. On behalf of the Circle Theatre Board and staff, I am happy to say that we are so excited that we can gather again. We missed you, our devoted supporters. Thank you. We are grateful for your overwhelming support of our Circle family and we look forward to sharing some great events with you this summer.

Always... Patsy Cline is about the value of friendship and how it makes us better humans. This theme is why I love this show. Over the last year, the one thing that made quarantine bearable for many was family and friends. Even though we were apart, we found ways to stay connected to the people we love. Today, as the world slowly reopens, our relationships have more meaning and we value being able to see and hug each other once again. Even though we are outside for this production, you can still count on experiencing the same intimate experience that Circle is known for. Please sit back and relax with us under blue skies as we share this beautiful story of friendship together.

From the bottom of my heart, I thank you for all that you have done and continue to do in support of Circle Theatre!



Lynn Atkins-Ryker
President of the Board of Directors

BOARD OF DIRECTORS

Lynn Atkins-Ryker | PRESIDENT
Mark Schmidbauer | FIRST VICE PRESIDENT
Jeff Kemperman | SECOND VICE PRESIDENT
Bob Lowry | TREASURER
Sara Dart | SECRETARY
Derek Call | PAST PRESIDENT

Stathi Afendoulis
Rebecca Dickenson
Shelley Irwin
R. Scott Keller
Rachel Kieras
Lisa M. Knight
Jeffrey Augustine Songco
Lou VanderHave

FINALE SPONSOR LEVEL

ALWAYS... PATSY CLINE

Centennial Securities

NOISES OFF

Warner Norcross + Judd

OPENING NIGHT SPONSOR LEVEL

I

HITS OF THE 80S: VOL. 2

Grand Rapids Women's Heath

AUDITION SPONSOR LEVEL

Mercantile Bank

IN-KIND SPONSORS

OFFICIAL HEADSHOTS

The People Picture Company

SEASON PRINTED MATERIALS

AllQuest

OFFICIAL PROMOTIONAL & ARCHIVAL VIDEOGRAPHER

SJK Video Productions

WEB PRESENCE SUPPORT

Intellectual Ninjas

DIVERSITY, EQUITY, & INCLUSION PROGRAMING SPONSOR

Steelcase

This season is made possible with the support from the Wege Foundation, as well as the Michigan Council for Arts and Cultural Affairs, a partner Agency of The National Endowment for the Arts.



STAFF & CREATIVE

Lynne Brown Tepper

Executive and Artistic Director

Ashlee McGreevy

Marketing and Outreach Specialist
Production Photographer

Lisa Mathias

Financial Accounts Coordinator

John Vesbit

Experience Manager

Don Wilson

Resident Scenic Designer
and Technical Director

Bill Duncel

Costume Shop Manager

Izzy Dowell

Marketing and Outreach Intern

Jessica Trenshaw

Experience Coordinator

Shannon Heldt

Experience Intern

**Zach Avery, Hunter Denkema, Jordan
Malone, Meridian Pearson**

Experience Associates

Caroline Cahoon

Production Graphics

SJK Video Productions

Production & Archival Videographer

**PROUD SPONSOR OF CIRCLE THEATRE
PRINTED MATERIALS**

A | l |  u e s t

Printing | Signage | Branding

616.822.2200

joe@allquestgr.com

A low-angle shot of a modern glass skyscraper against a blue sky with some clouds. The Warner Bros. logo, consisting of the word "Warner" in a stylized font and the "WB" monogram, is mounted on the upper left side of the building's facade.

Warner

Proud supporters of Circle
Theatre and its commitment
to the community through
exceptional theatrical arts.

wnj.com

Your legal resource.

Grand Rapids | Detroit | Midland | Macomb County
Muskegon | Kalamazoo | Holland | Lansing | Bloomfield Hills

ALWAYS... PATSY CLINE

SPONSORED BY CENTENNIAL SECURITIES

Created and originally directed
by Ted Swindley – based on a true story.

ORIGINAL MUSIC
DIRECTOR
VICKI MASTERS

AUTHOR
TED SWINDLEY

BAND & VOCAL
ORCHESTRATION
AUGUST ERIKSMOEN
TONY MIGLIORE

DIRECTOR
CHRIS GROOMS

CO-MUSIC DIRECTOR
VANESSA ALLEN

CO-MUSIC DIRECTOR
DEB PERRY

STAGE MANAGER
JESSICA WILSON

SCENIC & PROPERTIES DESIGNER
DON WILSON

COSTUME DESIGNER
BILL DUNCKEL

HAIR & MAKE UP DESIGNER
BRANDON SHAFER

SOUND DESIGNER
SAM JOHNSON

SOUND TECHNICIAN
KYLE APINALL

For licensing information on *Always...Patsy Cline* and all Ted Swindley shows, visit
www.tedswindleyproductions.com or contact Joan Kovats, (203) 978-0102.

LICENSED BY THE FAMILY AND ESTATE OF PATSY CLINE. All rights reserved.
ORIGINAL CAST ALBUM AVAILABLE ON MCA RECORDS.

Musical clearances secured and used by permission.

Any taping, filming, recording or broadcast of this play (musical or otherwise) is strictly prohibited.

AMPLIFYING IMPACT

by reimagining partnerships
in the communities where
we live and work.

Steelcase



MUSIC | PUBLISHING CREDITS

HONKY TONK MERRY GO ROUND

Acuff Rose Music, Inc.
Frank Simon/Stam Gardner

BACK IN BABY'S ARMS

Talmon Music, Inc.
Bob Montgomery

ANYTIME

Unichappel Music, Inc.
Herbert Happy Lawson

WALKIN' AFTER MIDNIGHT

Acuff Rose Music, Inc.
Don Hecht/Alan Block

I FALL TO PIECES

Sony/Tree Publishing, Inc.
Hank Cochran/Harlan Howard

IT WASN'T GOD WHO MADE HONKY TONK ANGELS

JD Miller
Peer International, Co.

COME ON IN (AND SIT RIGHT DOWN)

VF "Pappy" Stewart
Acuff Rose Music, Inc.

YOUR CHEATIN' HEART

Acuff Rose Music, Inc./ Warner
Chappel
Hank Williams, Sr.

STUPID CUPID

EMI Music Publishing
Neil Sedaka/Howard Greenfield

YOU BELONG TO ME

Ridgeway Music
King/Price/Stewart

SAN ANTONIO ROSE

Bourne Co.
Bob Wills

LOVESICK BLUES

Emi Music Publishing
Irving Mills/C. Friend

SWEET DREAMS

Acuff Rose Music, Inc.
Don Gibson

SHE'S GOT YOU

Sony/Tree Publishing, Co.
Hank Cochran

THREE CIGARETTES IN AN ASHTRAY

Eddie Miller/WS Stevenson
Acuff Rose Music, Inc.

CRAZY

Sony/Tree Publishing
Willie Nelson

SEVEN LONELY DAYS

Marshall Brown
Music Sales, Corp.
Earl Schuman/Walden Schuman

IF I COULD SEE THE WORLD (THROUGH THE EYES OF A CHILD)

Sammy Masters/Richard Pope
MCA Publishing

JUST A CLOSER WALK (Traditional)

BLUE MOON OF KENTUCKY

Peer International, Inc.
Bill Monroe

GOTTA LOTTA RHYTHM

Acuff Rose Music, Inc.
Barbara Ann Vaughn/WS Stevenson

SHAKE RATTLE AND ROLL

Unichappel Music, Inc.
Charles Calhoun

FADED LOVE

Warner Chappel
John Wills/Bob Wills

HOW GREAT THOU ART (Traditional)

TRUE LOVE

Warner Chappel
Cole Porter

IF YOU'VE GOT LEAVIN' ON YOUR MIND

Wayne Walker/Webb Pierce
Polygram International

BILL BAILEY (Traditional)

CAST

PATSY CLINE Emily Diener
LOUISE SEGER Mary Kate Murnen



EMILY
DIENER



MARY KATE
MURNEN

PRODUCTION STAFF

DIRECTOR Chris Grooms
CO-MUSIC DIRECTOR..... Vanessa Allen
CO-MUSIC DIRECTOR..... Deb Perry
STAGE MANAGER Jessica Wilson
SCENIC & PROPERTIES DESIGNER..... Don Wilson
COSTUME DESIGNER Bill Dunckel
HAIR & MAKE UP DESIGNER Brandon Shafer
SOUND DESIGNER Sam Johnson
SOUND TECHNICIAN Kyle Aspinall

MUSICIANS

PIANO / CO-MUSIC DIRECTOR..... Vanessa Allen
DRUMS / CO-MUSIC DIRECTOR..... Debra Perry
GUITAR Mitch Myers
BASS (UPRIGHT & ELECTRIC) Sue Stuit

ALWAYS... *PATSY CLINE* is performed with a 15 minute
intermission and runs approximately 120 minutes.

PRODUCTION STAFF



CHRIS
GROOMS



VANESSA
ALLEN



DEB
PERRY



JESSICA
WILSON



DON
WILSON



BILL
DUNCKEL



BRANDON
SHAHER



SAM
JOHNSON



KYLE
ASPINALL

YOU SHOULD WORK WITH NINJAS.

connecting **business** with **community**

616.275.2810
intellectualninja.com



intellectual
NINJAS
digital marketing + development

The

ARTS

are an
investment, too!



CENTENNIAL SECURITIES

· *Investments & Advice* ·

3075 Charlevoix Drive SE
Grand Rapids, Michigan 49546
(616) 942-7680 / (800) 253-4131

Grand Rapids Jenison St. Joseph Chicago

Member FINRA and SIPC

centennialsec.com

A LETTER FROM THE DIRECTOR

Over the past year, I have consistently thought about how impactful human connection is in our daily lives. COVID-19 has given us the opportunity to reevaluate how we connect with our loved ones, and maybe even decide with whom we really want to spend our time connecting.

Fortunately, we are living in a time where technology makes connecting more accessible than ever before. Platforms like Zoom, FaceTime, and Google Meet have given us opportunities to instantly connect with each other. To share the wins, the falls. To say I love you. I care. I'm struggling. I miss you.

Ultimately, *Always...Patsy Cline* is a story of connection, sincerity, and love that showcases how quickly people can become like family, and how much that changes who we are. It is my sincere hope that this show inspires you to always remember that the connections you make with others, no matter how seemingly big or small, have the power to change the world.

*I'll be loving you, always
With a love that's true, always
When the things you plan
Need a helping hand
I will understand, always, always*

*Days may not be fair, always
That's when I'll be there, always
Not for just an hour
Not for just a day
Not for just a year, but, always*

A handwritten signature in black ink, appearing to read 'Chris Grooms', with a long horizontal flourish extending to the right.

Chris Grooms
Director, *Always... Patsy Cline*

WHO'S WHO | CAST

EMILY DIENER *She/Her/Hers* **(Patsy).**

A familiar face to Circle Main Stage and Summer Concert Series audiences, Emily's various Circle shows include *The Addams Family Musical*, *It Shoulda Been You*, and *Hands On A Hardbody*. Favorite area roles include Katherine in Circle's 2019 production of *Freaky Friday*, Mrs. Wormwood in *Matilda* and Ursula in *The Little Mermaid* at Grand Rapids Civic Theatre, Yitzhak in *Hedwig and the Angry Inch* and Heather Chandler in *Heathers* at Actors Theatre. Emily serves as a Transaction Coordinator for Regal Home Group - RE/MAX of Grand Rapids and when not on stage, loves to binge the latest Netflix shows, try new recipes in the kitchen, and go for bike rides.

MARY KATE MURNEN **(Louise).**

Circle Main Stage credits include Narrator/Understudy in *Joseph and the Amazing Technicolor Dreamcoat*, Hildy in *On The Town*, and *Carrie The Musical*. Other area credits include *Bloody Bloody Andrew Jackson*, *Shrek*, *Legally Blonde* (Grand Rapids Civic Theatre), *If/Then* (Actors Theatre), *Sweeney Todd*, *Godspell* (Grand Valley State University), and *The Rocky Horror Picture Show* (The Fusebox). Mary Kate is a graduate of Grand Valley State University. She can be heard this summer as part of Circle's Summer Concert Series concert Hits of the '80s: Vol. 2.



You are *unique*
and your care should be too.

We listen and respond with care that is designed specifically for you, creating a healthcare experience that is tailored to your needs, interests, and concerns.

Grand Rapids  Women's Health

555 MIDTOWNE ST NE | GRAND RAPIDS, MI 49503 | (616) 588-1200
grandrapidswomenshealth.com

THE PEOPLE PICTURE COMPANY



LET'S CONNECT



THEPEOPLEPICTURECOMPANY.COM



616.676.7183



INFO@THEPEOPLEPICTURECOMPANY.COM



@PEOPLEPICTURECo



62 DIVISION AVE S, GRAND RAPIDS, MI 49503

WHO'S WHO | PRODUCTION STAFF

CHRIS GROOMS *He/Him/His (Director).*

Circle directing credits include *Freaky Friday*, *Honk!*, *Little Shop of Horrors*, and *Altar Boyz*. Other area directing credits include *Reefer Madness* at Actors' Theatre and *Agnes of God* at Heritage Theatre. A graduate of Aquinas College, Chris works in the Human Resources department at Grand Valley State University. In his free time, Chris loves going to the movie theatre and playing with his daughters, Violet and Rose. *Special thanks to my wife, Jenna, for all her love, support, and for being the best life and theatre partner I could have hoped for!*

VANESSA ALLEN (Co-Music Director)

Vanessa has served as Music Director for Circle Theatre, Muskegon Civic Theatre, Western Michigan University Theatre, Muskegon High School Theatre, and Ottawa Hills High School Theatre productions. Circle credits include *Crowns*, *Ain't Misbehavin'*, *Smokey Joe's Cafe*, *The Marvelous Wonderettes: Caps & Gowns*, *Carrie The Musical*, *A Chorus Line*, and *Joseph & The Amazing Technicolor Dreamcoat*. Other area credits include *The Wiz* and *Tambourine To Glory*. Vanessa may also be familiar to Circle audiences from her performance in last season's Pop Up concert series with her long time friend Debra Perry and in Circle virtual Living Room and Holiday concerts.

DEBRA PERRY (Co-Music Director).

Circle theatre credits include: *Smokey Joe's Cafe*, *Ain't Misbehavin'*, *A Chorus Line*, and more. Debra was also featured last summer with her long-time friend Vanessa Allen in Circle's Pop Up Concert Series, in several virtual Circle concerts this past year, and has served as music director for several of Circle's recent concerts. Deb began her musical career at age 6 and has mastered 10 instruments including drums, bass guitar, organ, piano, and saxophone. She is a music

educator of 26 years with Grand Rapids Public Schools, obtained a BA and MA in Music Education from Western Michigan University, and a MA in Educational Leadership from GVSU. Debra has been the recipient of numerous awards including the distinguished Ethel Coe Giant's Award. She is a noted songwriter and arranger and has composed works for national artists and has orchestrated full-scale works for the Grand Rapids Symphony and Westshore Symphony. Debra founded chorale Majestic Praise and is CEO of Joint Heir Music Group and Joint Heir Music Studios.

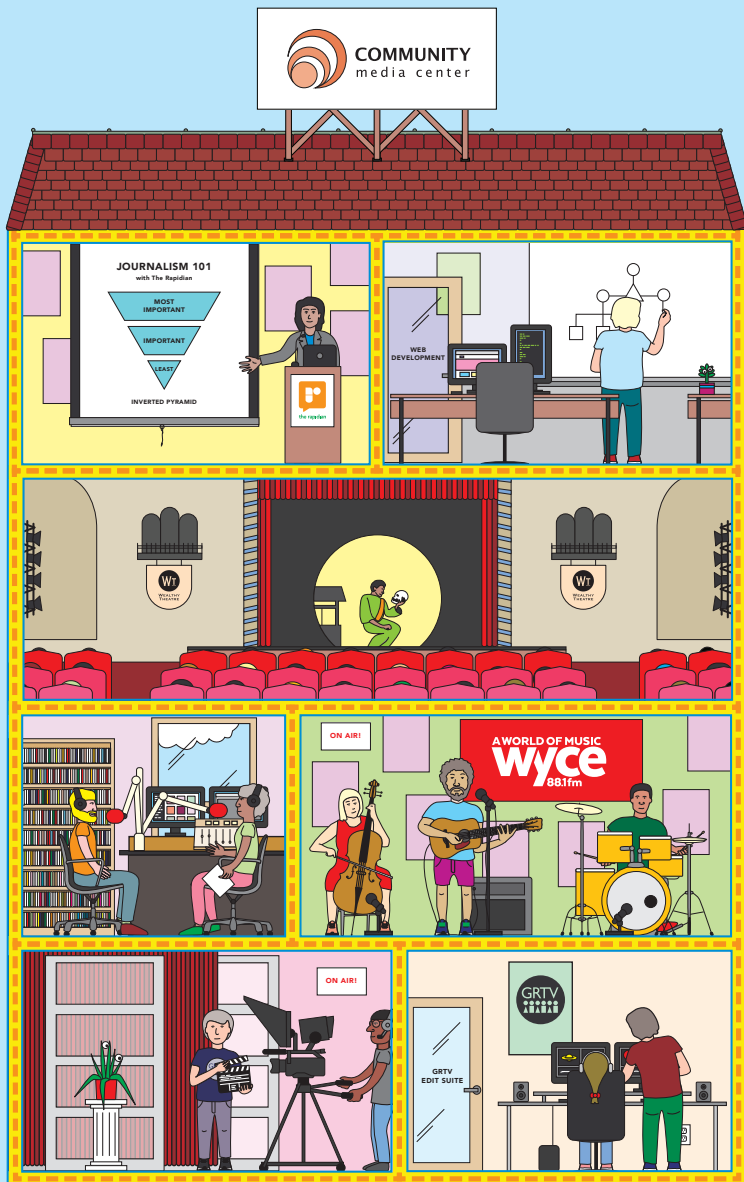
JESSICA WILSON (Stage Manager).

Jessica's past Circle Stage Management credits include productions of *Escanaba in Da Moonlight*, *Wait Until Dark*, and *Perfect Wedding*. A graduate of Calvin College, with a Bachelor of Arts, she currently serves as the National Account Admin & Executive Assistant for Micro Kickboard scooters.

DON WILSON (Scenic Designer & Technical Director).

Don started at Circle in 2005 and has 26 years of experience in Scenic Design in Michigan, Ohio, Indiana, and Minnesota, along with numerous theatres in Grand Rapids. A Siena Heights University grad with a degree in Theatre and Speech Communication, Don loves LEGO, comic book art, and Mountain Dew. *Thanks to my lovely wife and wonderful kids.*

Building community through media.



WYCE
88.1 FM



GRAND RAPIDS
CABLE ACCESS



COMMUNITY
media center



WEALTHY
THEATRE



the rapidian
THE RAPIDIAN, MICHIGAN

EDUCATION • MEDIA PRODUCTION • WEB DEVELOPMENT

www.grcmc.org

WHO'S WHO | PRODUCTION STAFF

BILL DUNCKEL *He/Him/His (Costume Designer)*. Bill's first experience with Circle was as a cast member in *La Cage Aux Folles* in 2005. Since that time, Bill (a Visual Merchandising Coordinator for Meijer and a Grand Award winner for his costume designs) has gone on to design numerous shows at Circle and also serves as Costume Shop Manager for Aquinas Performing Arts Center. In addition to designing for Circle Theatre, Bill has also designed at several area theatres and colleges including *On The Town* (JATATDC) and Aquinas College Theatre.

BRANDON SHAFER *He/Him/His (Hair and Make Up Designer)*. Brandon's previous traditional and special effects design work has been seen in Circle's productions of *Joseph & The Amazing Technicolor Dreamcoat*, *Freaky Friday*, and *The Addams Family Musical*. Brandon has been a Drag Queen Entertainer for 19 years and is currently a "Brunchette" with Michigan Drag Brunch. He is also the former Show Director of Rumors Night Club.

SAM JOHNSON *He/Him/His (Sound Designer)*. Sam has designed 200+ productions. Select favorites include *Les Miserables*, and *Newsies* (Grand Rapids Civic Theatre), *If/Then* (Actors' Theatre), *Freaky Friday* (Circle Theatre). Sam studied music and recording technology at Grand Rapids Community College and is the resident sound designer for Grand Rapids Civic Theatre. *Special thanks to my partner Dez and son Ean for putting up with my hectic schedule and being my biggest supporters.*

KYLE ASPINALL (Sound Technician). Circle credits include *The Gin Game*, *A Few Good Men*, *A Chorus Line*, and Circle's Summer Concert Series for the 2017, 2018, and 2019 seasons. Stage managing credits include *All The Way* (Civic

Theatre). He attended Central Michigan University and is employed by Karona by Jeld-Wen. *Thanks goes to everyone who I have worked with in a production. We together create shows.*

TED SWINDLEY (Author). Ted Swindley is internationally known as writer and director of the popular musical, *ALWAYS... PATSY CLINE*. He is the founding artistic director of STAGES REP in Houston, Texas. He was also named to the Esquire Magazine's register of outstanding Americans in arts and letters. Mr. Swindley was the recipient of the Los Angeles Dramalogue award for outstanding direction of *CARNAL KNOWLEDGE* by Jules Feiffer. Currently, he is president of TED SWINDLEY PRODUCTIONS, INC., a theatrical licensing and consulting company, and continues his 30 year career writing plays and musicals, consulting and mentoring playwrights, as well as directing plays for various theatres throughout the U.S. and abroad. Mr. Swindley is an active member of THE DRAMATISTS GUILD OF AMERICA and STAGE DIRECTORS AND CHOREOGRAPHERS.

Author's Representative: Joan Kovats
Business Management: Melanie Clark
Original Music Director: Vicki Masters
Band and Vocal Orchestrations: August Eriksmoen, Tony Migliore
Legal Counsel: Clair G. Burrill, Richard Garmise, Sawnie R. Aldredge

LICENSED BY THE FAMILY AND ESTATE OF PATSY CLINE. All rights reserved.

ORIGINAL CAST ALBUM AVAILABLE ON MCA.

THE BEST OF BROADWAY IS
WAITING FOR YOU!



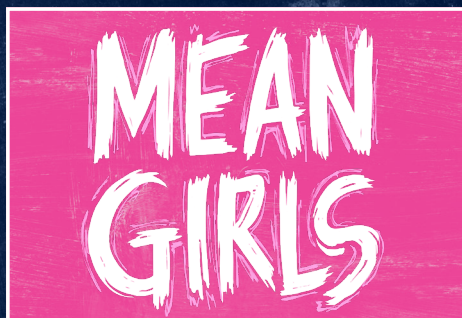
January 11 – 16, 2022



March 29 – April 3, 2022



May 3 – 8, 2022



June 21 – 26, 2022



November 8 – 13, 2022



February 8 – 20, 2022

SEASON TICKET PACKAGES ON SALE NOW!

For more information, visit BroadwayGrandRapids.com

SUPPORT CIRCLE

Norma's Circle (\$5,000+)

Catherine Augenstein
Pamela & John Burch
Robert Lowry
Judy Maggini

Circle In The PAC (\$500 - \$4,999)

Dennis & Lauri Atkinson
Hugh & Marilyn Barnard
Richard & Tracey Cassard
Scott Nowakowski & Deb Cleland
Paul & Bridget Farr
Jane Frey
Buz & Terrie Graeber
John Hunting
Scott & Michele Keller
John & Rita Kirkwood
Harry & Sheila Knopke
Melissa Kutsche
In Honor of Daniel K. Hess
Leo & Margaret Litowich
David & Carole McNulty
Bob & Sandy Navis
Greg & Karen Rademacher
Kimberly Scott
Centennial Securities
Becky Summers
Mary Thorrington
Gary Walker
Christopher Witmer
In Memory of Chris and Sara Witmer

Circle In The Park (\$350 - \$499)

Jim & Mary Atkinson
Ruth Bryk
Sandra Genson
Tim & Darcy Hartley
Neil & Catherine McKenzie
Marlene Murray
Gloria Pitsch
Tom & Kathy Sullivan
Cat & Roger Timermanis
Lou VanderHave
*In Honor of Pete DeMaagd, Jack Gillisee,
Deirdre Chervenka*

Circle In The Pantlind (\$200 - \$349)

Roger & Nancy Anglemeyer
Brian & Sue Bakkila
Russell & Maureen Bartz
In Honor of Patrick Bartz & Virginia Hoag
Jane Beld-Smith
Pat & Marcia Bell
Patrick Bishop
Ben Boerkoel

Geoffrey Bryan
Nicole Burdick
*In Honor of Deirdre Chervenka Collins & CARE
Ballet Board of Directors*
Mary Byrne
Sara Dart
Louis & Billie Dutmers
Maureen Fahey Dreher
Jeff & Sheila Frank
Jean Gardner
Alita Hassan
Patricia Hawkins
Joelene Hess
Nikki Hoort
Robyn Hubbard
Veronica Jones
Ruth Kemp
Dave & Betty Killoran
Lisa Knight
Mary Kretschman
Carol & Ron La Mange
Tom & Barb MacWilliams
Terry Malone
Lisa Mathias
Duwayne Meekhof
Bonnie K Miller
Sandra Miller-Orourke
Susan Murphy
Gregory Nelson
Leonard & Eileen Newman
Chase & Jessica Osbourne
Lisa Pietrzak
Bob Maxam & Jim Rekucki
In Honor of Dan Hess
Kristin Revere
Nate Reynolds
Mary M. Schaffer
Stephen & Laura Shoemaker
Eddie Stephens
In Memory of Eddie L. Stephens Jr.
Jo Ann Stevenson
Judy Stine
Jane Sundstrom
Richard & Marie Thompson
Ron & Laurel Tloczynski
Ellen & David Vandenberg
Frank & Sharon Van Haven
Bob & Marilyn Varty
Susan & David Warmels
Larry & Susan Whipple
Jim Williams
Joan Wilson
Jan Witbrodt
Gil Witt
Peter Woodfield
Keith & Kathy Wolverton
John & Melissa Ziech

i can
express my creativity.



AQUINAS COLLEGE

616.632.8900 • aquinas.edu

SUPPORT CIRCLE

Circle In The Rowe (\$100 - \$199)

The Avery Family
Maria Battaglia
Ronald Bierens
Jeffrey & Patricia Brinks
Roy Brown
Eleanor L. Bryant
Eleanor Bryant
Carol Burgess
Derek Call
Betsy & Steve Carlson
Charles Clapp
William Close
Maggie Coleman
James Collins
In Memory of Stew & Emilie Collins
E. Frederick & Michelle Davison
Steve & Mary Jo DeNolf
Joann Derby
Dr. Mary DeYoung
Jan & Jon Diaz
In Honor of JoAnn and Con Moelling
Debra Dieckman
Michael & Nancy Dodge
Matt Ruiter & Heather Duffy
Melissa & Tom Duimstra
Kimberly Falbo
Richard & Jennifer Farnsworth
Beverly A Fisher
In Honor of Our Dear Friend
Timothy Forbes
Twink Frey
Ardith J. Gloden
Barbara Haveman
Bluma Herman
In Honor of Don Herman
Bernie Houseward & Steve Pastoor
Robert Hull
Shelley Irwin
Amy Karel
Jennifer Kehoe
Bill & Jeanne Kendrick
Robert & Sharon Knapp
Katherine Kuhn
Maura Lamoreaux
Jane Lang
Susan L. McCarthy
Robert & Nadine Mueller
John Mulder
Roger & Sue Mumbrue
Douglas Parker
Marvin & Evelyn Plas
Joy & Bill Postmus
Christine Rener
Shelley Reynolds
Robert K Richards
Milt & Barbara Rohwer
Thomas & Karen Roth
Bill Russell & Ken Schmidt
Jennifer Schweigert

Jerry Scripps
Rose Anne Shansky
Mary Ann Sheline
Ann Skrobeck
Robert & Francisca Smith
Cathy Smith
William & Rosemary Stevenson
Robert Stoddard
Richard H. Shaw & Shirley D. Sutton
In Honor of Martha Jane Shaw
Eva Switek
In Memory of Liz Bland
Rita Taylor
Patti Trepkowski
David Treul
Nelson Van Elderen
Karen Vankoevinger
John & Sandra Vesbit
Jeremy & Julie Walser
Andrew Way
In Honor of Deidre Chervenka Collins
Johanna Wilberding
James Witte
Susan Wold
Joseph Worth
Patrick Ziegler
Sue Zuchowski

Dress Rehearsal (\$25 - \$99)

Skylar Alexander
Karen Ambs
William Andersen
Tyler Baerwolf
Robert Benedict
Lynne Black
cheryl blackington
George Bob
Jeanne Boruta
Ken & Vonnice Bouwkamp
Susan Bowers
Reed Bretz
In Honor of Medwin Johnson
Bruce & Becky Brink
Jim Brower
Michelle Bryk
Cindy Burch
Joe & Natalie Carmolli
Joe Chirco
Stuart & Rita Citron
Lisa Claus
Katherine Collen
Ken & Lisa Cook
Mary Coupe
Barbara Christian
Steven Cron
Brian Curtis
Ashley Davis
Audrey Debri
Leanne DeRousse
David & Marcia DeVos
Rebecca Dickenson

Jared Douglas
David Dresslar
Cullen Dyk
Phil Mary Ernvall
Bill Essling
Nancy Feighner
Maurice Fetty
Matthew & Leeann Fox
Lynn & Alice Francis
Kyle Gillian
Chris & Jenna Grooms
Bobby Haggard
Dan & Sue Haveman
Jacalyn Haystead
Jim & Suzanne Hedstrom
Daniel Holbert
Sandra Swanson
Ruth Jackson
Lori Jacobs
In Honor of Leonard Robinson
Leah Jane
William Jones III
Dixie Kapitula
Laura Kapitula
Amy Karasinski
Gina Karsten
Whitney Kaufman
Ann Kelley
Tom & Kris Kilgore
David & Gayle Kistler
Chris & Colleen Klein
Lisa Knight
Kellee Koncki
Charmaine & Raymond Kulczyk
Patrice Lankfer
Diane Lawarre
Marilyn Leven
Sondra Loucks Wilson
Mary Loupee
Gayle Lycos
Catherine Marlett Dreher
Barbara W McCargar
Kathy McCumber
Allison & Ashlee McGreevy
Elaine & Patrick McGreevy
Lisa Mead
Don Miller
Gary Moore

Julie Moran & Jeff Koelzer
Nancy Murphy
Kelly Olive
Brittany Olson
Philomena Paniwozik
Francine Paolini
Sarah Parker-Hormuth
Geraldyn Pasi
Sean Patterson
Nathan Phelps
Ronda Pilczuk
Aly Presser
Brenda Radlinski
Kristy Roeser
Elizabeth Rosebergking
In Memory of Anne King
Kris Russo
Shawna Ryser
Charsie Sawyer
Amy Schuiling
Justin Shorb
Tara Simonait
Catherine Sinning
E.J. Skronski
James Slater
Gwyn Smith
In Honor of Sharon Smith
Nancy & Don Smith
Kathleen Stack-Gill
Eric John Szczepaniak
Marcene Telfer
Teresa L. Thome
Christopher Thompson
Nancy Tigchon
Derrick & Michelle VanAllsburg
Sue Vandyke
Darren & Amy Wenzlick
Richelle Witbrodt & Hannah Whyte
Susan Williams
In Memory of Cait Williams
Donald & Sandy Williams
Christopher Wilson
Barbara Wisse
Tom & Nancee Woudstra
Heather Yerrick
Roger & Carol Zinnecker

THANK YOU

Your generous donations have enabled Circle Theatre to continue to bring high quality plays, musicals, and children's theatre to West Michigan.

Thank you from the bottom of our hearts for your continued support of local performing arts.

CIRCLETHEATRE.ORG/DONATE

GRAND RAPIDS BALLET

James Sofranko, Artistic Director



2021
2022 | SEASON

MOVING *FORWARD*

EXPLORE [GRBALLET.COM/2122SEASON](https://grballet.com/2122season) TODAY

New Jerusalem



The Interrogation of Baruch
de Spinoza at Talmud Torah Congregation:
Amsterdam, July 27, 1656

By David Ives
Live outdoor
performance at
Temple Emanuel

June 9-13th

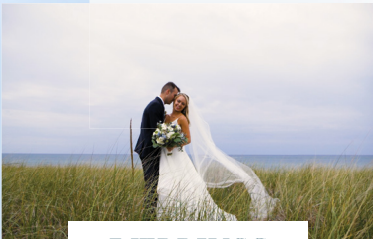
More info at: jtgr.org



SJK

PRODUCTIONS

We are proud to support
Circle Theatre



WEDDINGS



EVENTS

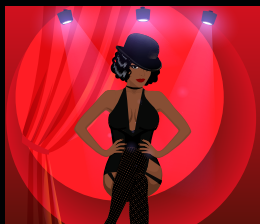
COMMERCIAL

THE WAIT IS OVER

LIVE THEATRE

IS BACK!

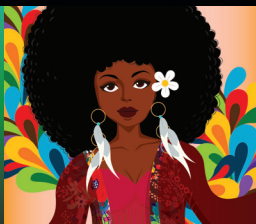
LIMITED TICKETS ARE GOING FAST!



CABARET



**NOISES
OFF**



American Graffiti
IN CONCERT



CIRCLE
**SUMMER
CONCERT
SERIES**

ABC: BOY BAND EVOLUTION
JUNE 7 | AUGUST 16

**HELLO SUNSHINE:
SONGS OF SUMMER**
JUNE 14 | AUGUST 23

HITS OF THE 80S: VOL. 2
JULY 19 | SEPTEMBER 13

**FREEBIRD: CLASSIC ROCK OF THE
70S**
JULY 26 | SEPTEMBER 29



CIRCLE
**POPUP
CONCERT
SERIES**

HARK UP SUMMER CONCERT | JUNE 21
LISA KNIGHT & FRIENDS FUNDRAISING CONCERT | JULY 12
ELLIE FRANCES | AUGUST 2
JOLENE FRANKEY & SCOTT PATRICK BELL | AUGUST 9

DETAILS & TICKETS AT [CIRCLETHEATRE.ORG](https://www.circletheatre.org)

**PROUD SPONSORS OF
CIRCLE THEATRE'S
2021 SEASON**



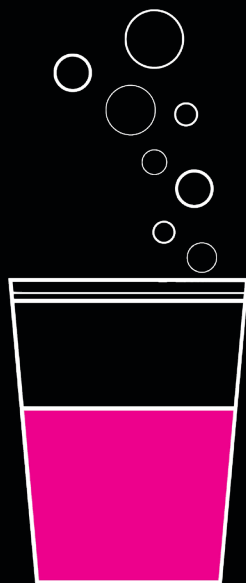
HomeLight

*Thank you for being a part of our Circle and for
supporting the performing arts in West Michigan!*

LOBBY BAR

JOIN US ON THESE SELECT NIGHTS
WHEN WE SERVE CRAFT BEER & WINE
PRE-SHOW, INTERMISSION*
AND POST-SHOW.

ALL PROCEEDS BENEFIT CIRCLE THEATRE.



LOBBY BAR NIGHTS

JULY 16	CABARET
JULY 19	HITS OF THE 80S: VOL. 2
JULY 23	CABARET
JULY 26	FREEBIRD: CLASSIC MUSIC OF THE 70S
AUGUST 13	NOISES OFF
AUGUST 16	ABC: BOY BAND EVOLUTION
AUGUST 23	HELLO SUNSHINE: SONGS OF SUMMER
SEPTEMBER 10	HAIR
SEPTEMBER 6	ANNUAL SEASON PARTY
SEPTEMBER 17	AMERICAN GRAFFITI IN CONCERT
SEPTEMBER 29	HAIR
OCTOBER 2	MOVIES ON THE LAWN
	THE ROCKY HORROR PICTURE SHOW
	MOVIES ON THE LAWN
	THE ROCKY HORROR PICTURE SHOW

Bar opens 30 minutes before show-time.

*When Applicable