

CIRCLE  
THEATRE

*Songs in the*  
*Key of*  
**S**tevie

Sponsored by  
Warner Norcross + Judd LLP



# GENERAL INFORMATION

## BOX OFFICE HOURS

MONDAY - FRIDAY | 12PM - 5PM

MONDAY - FRIDAY PERFORMANCE DAYS | 12PM - CURTAIN

SATURDAY | 2PM - CURTAIN

SUNDAY | 12PM - CURTAIN

## LATE ARRIVALS

Patrons arriving late will be seated at the House Manager's discretion.

## NO STANDING

No standing is permitted in the back of the theatre. If you become uncomfortable and/or have to move out of your seat for any reason, you may stretch your legs in the upper or lower lobby.

## ELECTRONIC DEVICES

Please turn off all electronic devices that light up or make noise. Please, no texting. The taking of pictures and/or recordings (audio or video) is prohibited; the device may be taken from you and held until after the show.

## EMERGENCY CALLS

If you anticipate the need to be reached in the event of an emergency, you may leave your name and seat number with the House Manager. A House Manager will also be available in the House during the run of the show. Our emergency contact number is **616 632 2996**. In the event that someone is not available at this number, Aquinas College Campus Safety's number is **616 632 2462**; a dispatcher is available 24/7.

## YOUNG AUDIENCE

Most Main Stage productions are geared toward mature audiences and may not be appropriate for younger audiences. Our Magic Circle productions provide wonderful family entertainment and an introduction to the live theatre experience. Please call the box office at **616 456 6656** for information on age appropriateness of any of our shows. Children below school age may not attend our Main Stage productions. Please, no babes in arms or toddlers. At no time can a child enter the auditorium without a ticket.

## SPECIAL PATRON SERVICES

An induction loop is provided for the benefit of hearing aid users. To use, please switch your hearing aid to "T." Handicapped and wheelchair seating is available and easily accessible. When reserving tickets, please notify the box office personnel of any special needs or seating requirements.

## SMOKING

Aquinas College is a smoke-free campus.



CIRCLETHEATRE.ORG | 616 456 6656

BOX OFFICE | 1703 ROBINSON RD SE

# FINALE PARTNER LEVEL

## CIRCLE SUMMER CONCERT SERIES

Warner Norcross + Judd

### OFFICIAL HEADSHOTS

The People Picture Company

# ACT 2 PARTNER LEVEL

## SEASON PRINTED MATERIALS

AllQuest

### WEBSITE PROVIDER

Intellectual Ninjas

### OFFICIAL VIDEOGRAPHER

SJK Productions

### OFFICIAL PHOTOGRAPHER

Ashlee Lambart Photography

# ACT 1 PARTNER LEVEL

## BLITHE SPIRIT

Overhead Door

# COMMUNITY EQUITABLE, ACCESS PROGRAM PARTNER

Steelcase

# IN-KIND PARTNERS

## TECH MEAL PROVIDER

KJ Catering

This season is made possible with the support from the Wege Foundation, as well as the Michigan Council for Arts and Cultural Affairs, a partner Agency of The National Endowment for the Arts.



# SET LIST

## Overture

Uptight (Everything Alright)/All I Do/  
Jammin/Living for the City

You Haven't Done Nothing

You Are the Sunshine of My Life

Fingertips

Hey Love/My Cherie Amour/

For Once in My Life/

Signed, Sealed, Delivered

Superstitious

Where Were You When I Needed You/

Sir Duke/Visions/Higher Ground

Loves in Need of Love

I Can Only Be Me

As

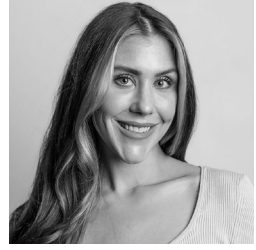
# CAST



Keon  
Atkins



Fatima  
Bawah



Savana  
Beal



Al  
Hight



Kayleigh  
Kuklewski



Matty  
Owen



Emmanuel "Manny"  
Phillips



Erica  
Starks



Timothy D.  
Woodson

# PRODUCTION STAFF



Darius  
Colquitt



Vanessa  
Allen



Debra  
Perry



Catherine  
Marlett Dreher



Kyle  
Aspinall

DIRECTOR ..... Darius Colquitt  
CO-MUSIC DIRECTOR ..... Vanessa Allen  
CO-MUSIC DIRECTOR ..... Debra Perry  
LIGHTING DESIGNER/ENGINEER ..... Catherine Marlett Dreher  
SOUND DESIGNER/TECHNICIAN ..... Kyle Aspinall

## MUSICIANS

MUSIC DIRECTOR/AUX KEYBOARD ..... Vanessa Allen  
MUSIC DIRECTOR/KEYBOARD ..... Debra Perry  
GUITAR ..... Dale Bell  
HORNS ..... John Gist  
DRUMS ..... Tiffany Pearson  
BASS ..... Erika Purcell-Williams



Proudly supporting  
**Circle Theatre's**  
commitment to the  
community



Warner provides quality legal services to clients of all sizes; operating in Michigan, North America and around the world.



**Warner**

Grand Rapids | Detroit  
Midland | Macomb County  
Muskegon | Kalamazoo  
Holland | Lansing  
Bloomfield Hills

[wnj.com](http://wnj.com)

# WHO'S WHO | CAST

**KEON ATKINS** *He/Him (Vocalist)* past credits include *Songs in the Key of Stevie* (Vocalist) at Circle Theatre; *Once on This Island* (Papa Ge), *Suzannah* by Carlisle Floyd (Lil Bat), *The Marriage of Figaro* (Don Basillo), *Singing in Place Series* (OGR), *I Dream, Samson and Delilah*, and *The Gondoliers* by Gilbert and Sullivan (Marco) at various Theaters and Operas including Grand Rapids Civic Theatre, West Michigan Opera Project, Opera Grand Rapids, and West Michigan Savoyards; Soloist and chorister for Holland Chorale, Park Church, Marvin Winans, and other organizations. Keon graduated from the University of Michigan in 2009 and currently works as a Statewide Program Lead for Consumers Energy.

**FATIMA BAWAH** *She/They (Vocalist)* appeared in last season's production of *RENT* (Joanne) *Little Shop Of Horrors* (Chiffon) and *Get Ready: The Music of Motown* concert. Other area shows include *The Laramie Project* (Zubaida Ula) at The Arts Coalition, *The Crucible* (Tituba) at Shadblow Theatre and *Now Here This* (Woman 2), *Sez She* (Ensemble), *One of Our Own* (Kacey), and *Antigone* (Nurse) at Aquinas Theatre.

**SAVANA BEAL** *She/Her (Vocalist)* Savana appeared on Season 12 of *American Idol* in 2013. She is the lead singer of a Top 40's international cover band. She has been an entertainer for U.S. troops in Iraq and other countries throughout the Middle East, Asia, and Europe. Savana is a stylist at a local boutique in Grand Rapids and is the co-founder of a non-profit organization in southern California called LOT318 where she serves on the board of directors. Savana is

passionate about raising awareness for children with disabilities and rare diseases, and spends time advocating for equal access to education and opportunities. She loves to volunteer in the community with her family and her church. *"Special thanks to my husband for encouraging me to continue to perform, and for managing our family so I can fulfill my dreams. Thank you to my boys, Wade and Remington, for always cheering me on and being my biggest fans."*

**Al Hight** *He/Him (Vocalist)* is an alumni of Air University Huntsville Alabama, Spring Arbor University, Michigan Defense Equal Employment Opportunity Institute, Coco Beach, Florida Diversity, Equality & Inclusion University of Souther Florida. He is a Toast Master Silver & Gold Master Speaker. Some of his hobbies include reading, writing, music and travel.

**KAYLEIGH KUKLEWSKI** *She/Her (Vocalist)* Past Credits include *Into the Woods* (Cinderella) at Circle Theatre, *Into the Woods Jr.* (Cinderella) at Grand Rapids Civic Theatre, Supper Club, MI Drag Brunch (Vocalist) presented by Circle Theatre, Monday Nights New Voices (Vocalist) in New York, New York, and West Michigan Whitecaps and Berlin Raceway National Anthem singer for the Grand Rapids Griffins. Kayleigh studied Musical Theater Performance at Columbia College Chicago. She is currently a stay at home mom. *"My greatest joy to date is being a wife to James and mom to Parker James and Jo Marie. Special thanks to Mimi and Papa and Oma and Opa for your support and love! Love you JD, pj and jm."*



# WHO'S WHO | CAST

**MATTY OWEN** *She/Her (Vocalist)* past credits include *Once The Musical* (MC) at Grand Rapids Civic Theatre, *Little Shop of Horrors* (Audrey) at Circle Theatre, *Hedwig & the Angry Inch* (Hedwig) at Actors' Theatre, *Xanadu* (Malpomene) at Betka-Pope Productions, *The Music Man* (Marian Paroo) at Circle Theatre, *Indecent* (Music Director) at Jewish Theatre, *Rocky Horror Show* (Music Director) at Betka-Pope Productions, and *Hunchback of Notre Dame* (Music Director) at Master Arts Theatre. Matty graduated from Indiana University with a degree in Theatre & Drama in 2018. She is currently a vocal coach at the Grand Rapids Voice Collective. *"Special thanks to my family!"*

**EMANUEL "MANNY" PHILLIPS (Vocalist)** is thrilled to be back at Circle theater after appearing in last years concert, Soul Groove: The Hits of Soul and R&B and in *Ain't Misbehavin* in 2009. He moved from Chicago to Grand Rapids in 2000 and also performed at Circle in Smokey Joe's Café and Men of Motown concert. Other area shows include *A Christmas Story*, *Shrek The Musical* and *Black Bold and Beautiful: Onward Together* at GR Civic Theatre. Manny is excited to embark on a new journey as the business owner of Lee Suits LLC, where they "Tailor to Perfection". Manny is also involved with many Grand Rapids community activities and loves to service at his home church.

**ERICA STARKS** *She/Her (Vocalist)* is a junior at Potters House High School. Some of her past credits include *The Crucible* (Assistant Director) and *Little Women* (Jo March) at Potters House High School; *Hair* (Ensemble) at Circle Theatre; *Once on This Island* (Ensemble) at Grand Rapids Civic Theatre.

**TIMOTHY D. WOODSON** *He/Him (Vocalist)* is a singer in the West Michigan Gay Men's Chorus Starting this year, he will be studying Music Recording at Grand Rapids Community College. His hobbies include reading, singing, writing, movies, music, and video games. He also enjoys writing and recording his own songs. *"I would like to thank Circle Theatre for giving me a chance to share my voice and my talent with other talented people. I would also like to thank my mom for inspiring me to keep singing and for sharing her love for music with me; growing up with my siblings and singing in church was such a blessed and a joy to do with my family. I would also like to thank God for giving me such a precious gift to share with the world."*

# WHO'S WHO | PRODUCTION STAFF

## **VANESSA ALLEN (Co-Music Director)**

has served as Music Director for Circle Theatre, Muskegon Civic Theatre, WMU Theatre, Muskegon HS Theatre, Muskegon Heights HS Theatre and Ottawa Hills HS Theatre productions. Circle productions include *Crowns*, *Ain't Misbehavin'*, *Smokey Joe's Cafe*, *The Marvelous Wonderettes: Caps & Gowns*, *Carrie The Musical*, *A Chorus Line*, *Joseph & The Amazing Technicolor Dreamcoat*, *Always Patsy Cline* and *Cabaret*. Other area credits include *The Wiz* and *Tambourine To Glory*. A graduate of Muskegon Community College, Hope College, Western Michigan University, and Grand Valley State University, she is a fine arts/shared time teacher with Grand Rapids Public Schools who enjoys working within organizations that provide access and opportunities for equity and inclusion. Vanessa is the proud wife of Rev. Larry D. Allen for more than 34 years, the mother of DeShaun and Derek Allen, and the bonus mom of Darius Carson, Javonna Allen, and Ramon Allen. "A special thanks to my family for all their love and support."

## **DARIUS COLQUITT (Director)**

has previously appeared in Circle's production of *RENT*, the virtual production of *Father Comes Home From The Wars, Parts I, II, & III*. Last season he wrote and directed Circle's concert *Get Ready: The Music of Motown*. Previous regional credits include: *Passing Strange* (Franklin/Joop/Venus) and *Hit The Wall* (Carson) at Actors' Theatre, *The Whipping Man* (Simon) at Jewish Theatre Grand Rapids, *The Diviners* (Buddy Layman), and *Blue/Orange* (Christopher) at Grand Rapids Communittee College

Players, and *The Meeting* (Malcolm X) at Ebony Road Players. Darius maintains his self-titled artistic entity (Darius Colquitt & Company) through which he curates art for countless clients & tours his own original solo works. He is also the Founder & Producing Artistic Director of BAM Talent.

## **DEB PERRY (Co-Music Director)**

Past Circle musician credits include: *Smokey Joe's Cafe*, *Ain't Misbehavin'* and *A Chorus Line*. Last season, Debra served as music director for *RENT*, *The Music of Motown*, *Divine Divas* and *Soul Groove*. She was the co-music director with her long-time friend Vanessa Allen for *Always Patsy Cline* and *Cabaret*. Deb began her musical career at age 6 and has mastered 10 instruments including drums, bass guitar, organ, piano, and saxophone. She is a music educator at Grand Rapids Public Schools, obtained a BA in Music Education from Calvin College, an MA in Music Education from WMU, and an MA in Educational Leadership from GVSU. Debra has been the recipient of numerous awards including the distinguished Ethel Coe Giant's Award. She is a noted songwriter and arranger and has composed works for national artists and has orchestrated full-scale works for the Grand Rapids Symphony and Westshore Symphony. Debra founded her own chorale Majestic Praise and is CEO of Joint Heir Music Group, her own record label, and Joint Heir Music Studios.

# WHO'S WHO | PRODUCTION STAFF

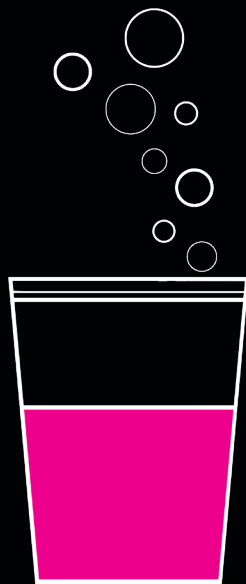
**KYLE ASPINALL** He/Him (**Sound Technician**) Circle credits include *Little Shop of Horrors* as the sound technician, and has been the sound designer/technician for Circle's Summer Concert Series since 2017. Other sound designer/technician roles include *Indecent* and *Creation of the World and Other Business* at Jewish Theatre. He attended Central Michigan University and is employed by Karona by Jeld-Wen.

**CATHERINE MARLETT DREHER** She/Her (**Lighting Designer/Engineer**) has designed over 200 shows and concerts. Some of her favorite lighting designs include *Altar Boyz*, *Sweeney Todd* and *Fun Home* at Circle Theatre, *Ragtime*, *Once* and *Matilda* at Grand Rapids Civic Theatre, and *Next to Normal*, *Sideshow* and *The Light in the Piazza* at Actors' Theatre. Catherine is the Production Manager and Resident Lighting Designer at Grand Rapids Civic Theatre. She also works as a freelance designer in the West Michigan area for many organizations and venues.

# LOBBY BAR

JOIN US ON THESE SELECT NIGHTS  
WHEN WE SERVE CRAFT BEER & WINE  
PRE-SHOW, INTERMISSION\*  
AND POST-SHOW.

ALL PROCEEDS BENEFIT CIRCLE THEATRE.



## LOBBY BAR NIGHTS

- |              |  |
|--------------|--|
| MAY 5        | 25TH ANNUAL PUTNAM COUNTY SPELLING BEE<br>*Sponsored by Arktos Meadery |
| JUNE 2       | BLITHE SPIRIT  |
| JULY 14      | PIPPIN   |
| JULY 17      | THE BRITISH INVASION   |
| JULY 24      | BLUE COLLAR ROCK CONCERT   |
| AUGUST 11    | MA RAINEY'S BLACK BOTTOM   |
| AUGUST 14    | HITS OF THE '90S   |
| AUGUST 21    | SONGS IN THE KEY OF STEVIE WONDER                                      |
| SEPTEMBER 8  | SWEENEY TODD   |
| SEPTEMBER 11 | THE BRITISH INVASION   |
| SEPTEMBER 18 | BLUE COLLAR ROCK   |

Bar opens 30 minutes before show-time.